

Friesian Conformation 101

UPWARD BUILD

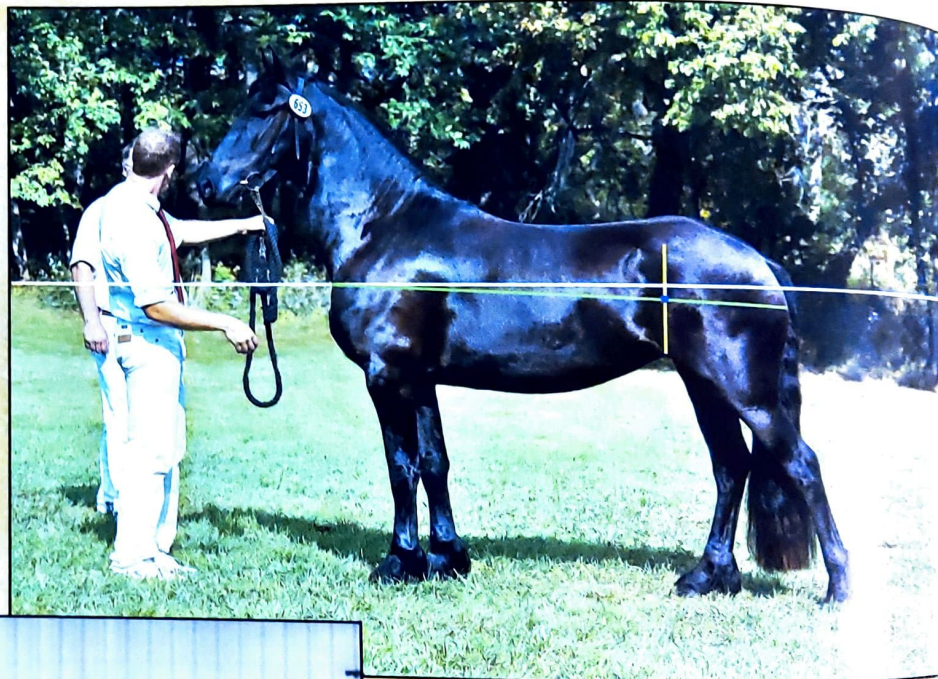
Horses with an upward build have an advantage in sports. Not only do they have more presence, they also find it easier to carry their weight on the hindquarters. As the saying goes, that is where the engine is. The reason for the preferred upward build is described in the KFPS Breeding Goal: "A harmoniously, functionally, evenly, and upwardly built horse with a long forearm and not too heavy in the body."

A horse with an upward build has an uphill body. The direction of the body is defined by the length of the cannon bone, the position of the foreleg in relation to the body, and the angles in

the point of the shoulder. By drawing an imaginary line through the horse's body the direction of the body's build can be defined.

This imaginary line is drawn by finding the center from the groin to the top of the pelvis, as depicted by the yellow line and the blue dot. Next, draw a line through the body from the horse's sternum, intersecting with the blue dot, as shown by the green line. The imaginary green line is compared with the horizontal white line through the body. It is important to ensure the horse is standing on level ground. By doing this you can define the degree of the upward build of the horse.

1 This horse has an upward build and therefore scores more than average on direction of the body. Credit: Jesca T.A., Ster owned by Jill Clayton. Photo by Marilyn Merrick©.



2 This horse has a downward build and scores lower than average on direction of body. Photo by Connie Louthen©.